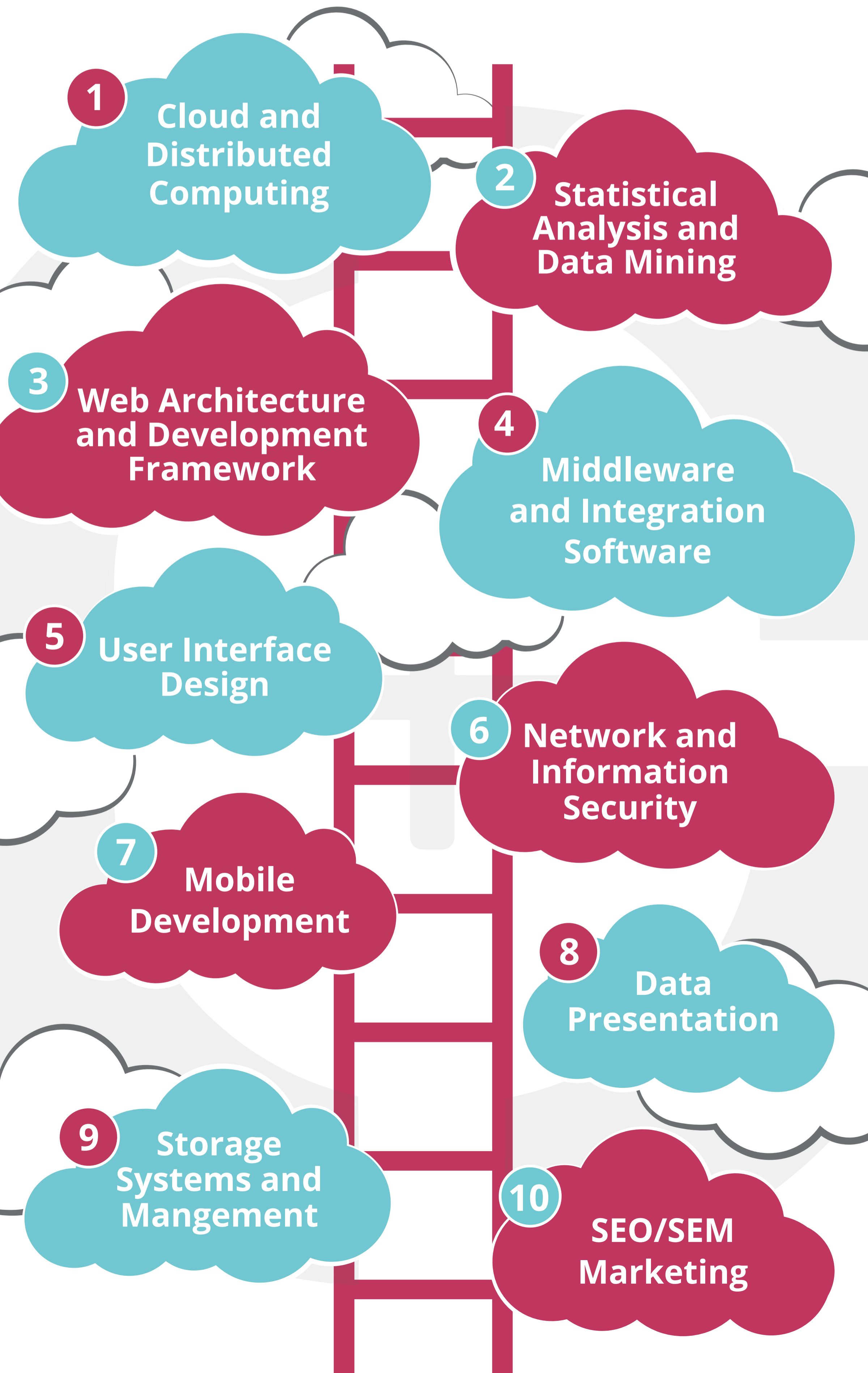


10 Hottest Tech Skills for 2017

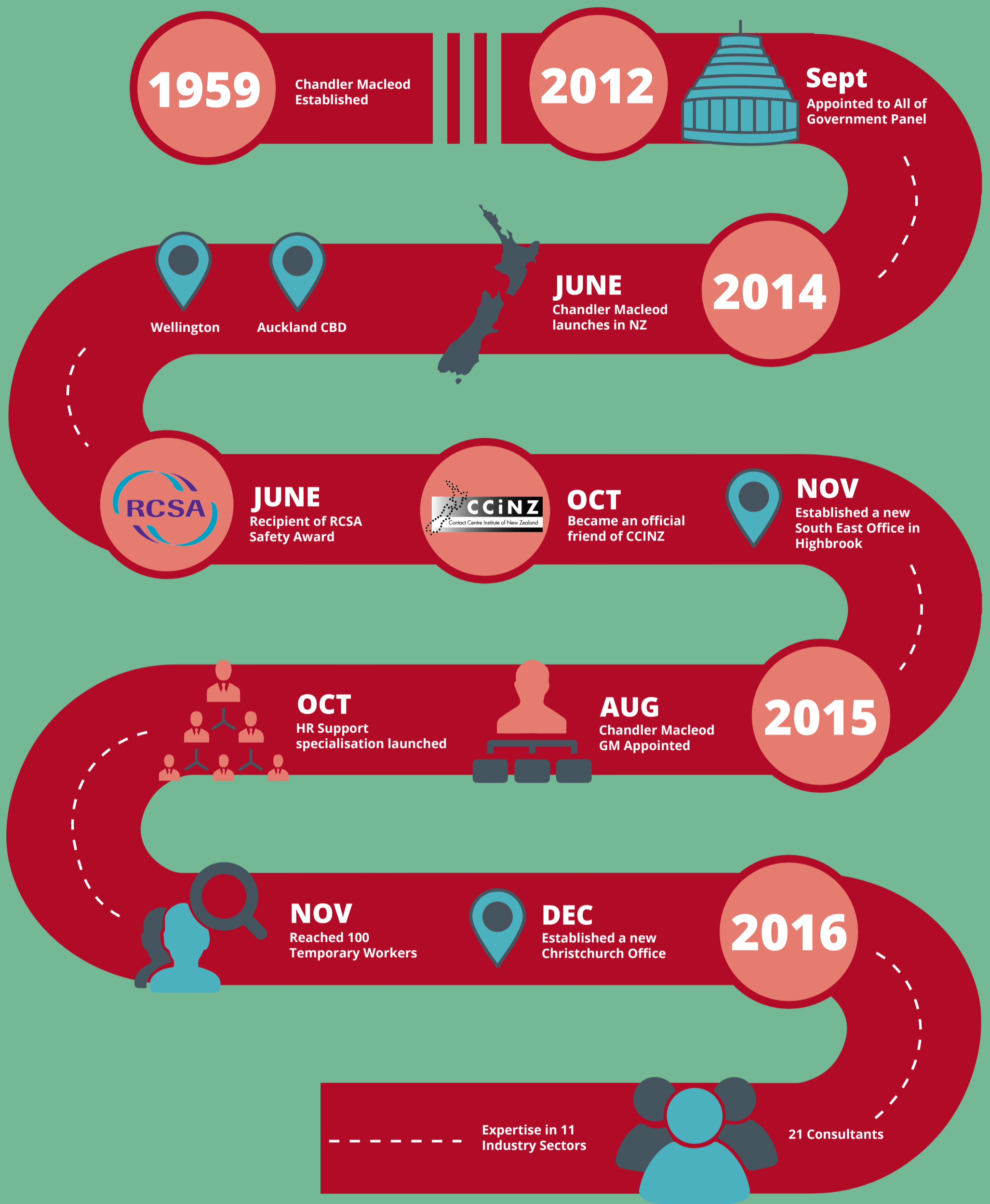
With technology constantly shifting and new roles cropping up, now is an excellent time to acquire new tech skills. Upskilling yourself will make you a more valuable candidate and you'll be more likely to catch the eye of a top employer. Check out the top 10 skills for 2017.



CELEBRATING UNLEASHING POTENTIAL IN NEW ZEALAND



Chandler Macleod has been delivering a broad range of recruitment solutions for over 55 years. As one of the Trans-Tasman region's largest employers – we know what it takes to recruit, select and retain the best people. We've only been active in New Zealand for 18 months, but we're already making a big impact.



UNMATCHED SERVICE BREADTH



Chandler Macleod specialises in 11 industry sectors ranging from Building & Construction to manufacturing, FMCG and Banking & Finance



Located in 4 locations nationally, we have the capability to service major centres and regional locations



With a service supply that covers Chandler Macleod, OCG Consulting, Luminary and Grafton, we have the capability to service all levels of our clients needs.

YOUR VISUAL GUIDE TO THE HEALTH AND SAFETY ACT

IN RELATION TO ONESTAFF WORKERS



Health and Safety is a vital part of the workplace. Accidents that could be prevented result in dozens of deaths and thousands of serious injuries every year. This is why it is crucial that we ensure a safe environment, and protect all workers in the workplace.

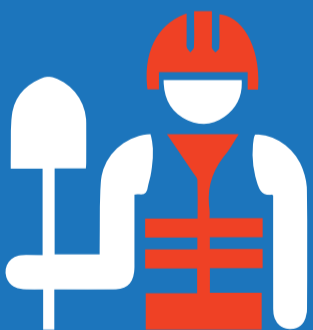


WORKING AS ONE TO CREATE SAFER WORKPLACES

WHAT YOU NEED TO KNOW AS A PCBU WITH TEMPORARY STAFF AT WORK IN RELATION TO THE NEW HEALTH AND SAFETY ACT



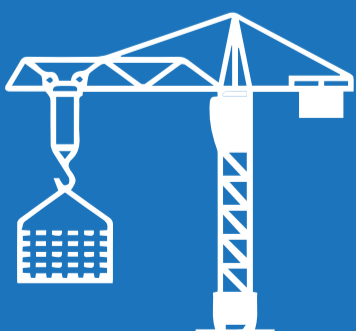
OneStaff workers will have already been through an initial induction, which includes a basic Health and Safety video.



OneStaff expects every worker to undergo a Site Specific Induction for **every** job and workplace they work at.



OneStaff workers should be provided with appropriate training and supervision. Please email a copy of all training to: health&safety@onestaff.co.nz



OneStaff expects all of its workers to be included in all Toolbox Talks and other Health and Safety activities onsite.



OneStaff are to be made aware of any change in duties of our workers.

OUR OVERLAPPING DUTIES ARE TO CONSULT, CO-OPERATE AND CO-ORDINATE



AS A PCBU IT'S YOUR RESPONSIBILITY TO CONTROL:

